



Community
Involvement



Donors



Grants



Youth Programs

"Celebrating 23 years of connecting people who care with needs that matter to our community"



January 2015

In This Issue
[FIST Wish Grant Giving](#)
[Quarterly Grant Giving](#)
[Land Protection Fund](#)
[Nonprofit Webinars](#)

Calendar:

[2015 Scholarship Deadlines](#)
Donor Established Scholarships
Applications available: Now
Deadline: Feb.15 2015
See [scholarships](#) for more
information.

2013 Public Tax Forms
SCCF 2013 tax forms are now public.
[Click here](#) to see the SCCF 2013 Form 990,
or [Click Here](#) to see the 2013 IMAN Form
990.

2014 Annual Report

Hello !

Thank you to our Donors

The Community Foundation would like to recognize and thank the following individuals, families, and organizations for their generous donations in the month of December. Your support is greatly appreciated.

[Donors](#)

Donations can be made online through the Donate Now button, mailed to 1701 N Wayne Street Angola, IN 46703, or brought into the office between 8:30am and 4:30pm Monday through Friday

DONATE NOW
Secure donations through
Network for Good

The Steuben County Community Foundation has recently published its 2014 Annual Report. To see the report [click here](#).

Grant Cycle Calendar

Healthcare	January 31st
Other	April 30th
Human Services	July 31st
Education	October 31st

[Grant Application](#)

Donor Acknowledgement Letters

Donor Acknowledgement Letters should be provided by all non-profits for contributions of \$250 or more. If a donor wishes to make a non cash contribution of \$500 or more, a receipt must be provided.

[Sample Acknowledgement Letter](#)

Board Members

Hope Korte, Chair
Kevin Stoy, Vice Chair
James Burns, Treasurer
Marla Toigo, Secretary
Greg Burns
Dave Goodwin
Sherry Holiday
Jim Ingledue
Phil Meyer
Julie Troyer
Randy White
Jan Williams

Staff

Jennifer Danic
President & CEO
jdanic@steubenfoundation.org

Sandy Ferrell
Office Manager
sferrell@steubenfoundation.org

Jacqui Gentile
Program Associate
jgentile@steubenfoundation.org

Pam Harger
Youth Philanthropy Coordinator
pharger@steubenfoundation.org

Michael Spears
Intern
sccf.intern@steubenfoundation.org

Important Deadlines:
Donor Established Scholarships Deadline: February 15, 2015

Please Contact Jacqui Gentile
jgentile@steubenfoundation.org with questions.

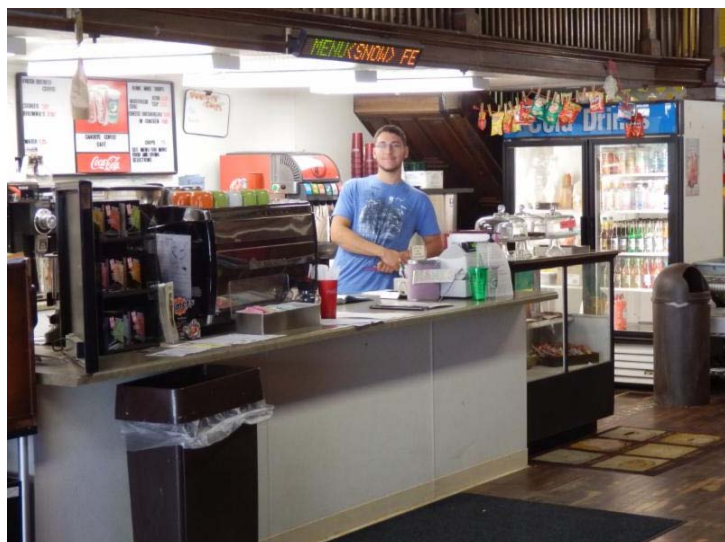
FIST Wish Grant Giving

Steuben County Community Foundation's youth pod, FIST, granted \$6,500 for 29 different classroom projects last month. Grants were given to teachers in the Fremont, Hamilton, and MSD School systems. This giving was a part of their annual FIST Wish Grant giving program. FIST has been providing these grants to local teachers for the past 13 years. Since FIST was founded, the group has given out over 400 grants totaling over \$82,600! [Click here](#) for full article.



SCCF Quarterly Grant Giving

The Steuben County Community Foundation distributed \$208,072 in new grant awards to nonprofit agencies serving Steuben County from October 1 - December 31, 2014. A listing of organizations and amount awarded can be found [here](#). After 2 quarters of its fiscal year, SCCF has granted over \$500,000. Grants were awarded though unrestricted, designated, donor-advised or field of interest funds; many organizations received grants through more than one giving vehicle.



SCCF established an endowment fund to support the operations of Cahoots Coffee Cafe with a \$5,000 seed grant.

Land Protection Endowment Fund Created at Steuben County Community Foundation



The Steuben County Community Foundation has a Notary Public on staff. Contact [Sandy Ferrell](#) for details.

The [Baron von Steuben Society](#) is



based upon a donor making a provision for a specific charity or general gift through the Steuben County Community Foundation in his or her estate plans. This

can be done through any of the following methods: will bequests, life-income, vehicles, trusts, life insurance policies, or tax sheltered accounts (IRA, 401K). There are not any set restrictions or minimums. If you are interested in becoming a member of the Baron von Steuben Society and creating a legacy impacting future generations, or would like further information about providing an estate planning gift, please call or email [Jennifer Danic](#) at (260)665-6656.

The Steuben County Community Foundation (SCCF) is pleased to announce the creation of the Northeast Indiana Land Protection Endowment Fund. This fund, established with a \$25,770 donation by a donor wishing to remain anonymous at this time, will be used for land protection from subdivision, commercial, and industrial development and to protect open space in Northeast Indiana.

[Click here for the full press release.](#)

Wood-Land-Lakes

Resource Conservation & Development

SCCF Offering Free Nonprofit Webinars

SCCF is hosting a series of FREE HR webinars. The Foundation purchased these webinars from [Indiana Philanthropy Alliance \(IPA\)](#). IPA developed these webinars for the sole benefit of Nnonprofit organizations to increase efficiency and improve HR within their organizations. These webinars are to help you use resources you can access and policies you can implement to effectively manage employees in a small (2-10 employee) nonprofit organization. Beginning February 17, the webinars will take place every other Tuesday at 11:00 AM ET, in the SCCF Board Room. Each webinar will last approximately an hour. The first 15 to register for each event will be given a spot. To register simply email Jacqui Gentile, telling her your name, nonprofit organization and what webinar you'd like to attend (you can attend as many as you'd like).

[Click here for more information.](#)



Thank you for your continued support!

Donors make the dreams of Steuben County residents a reality.

Sincerely,

Your friends at the Steuben County Community Foundation



Looking for information about a nonprofit organization in Steuben County? Visit our [Non-Profit Directory](#).

Like us on Facebook 

The Steuben County Community Foundation is confirmed in compliance with the *National Standards for US Community Foundations*.

